



Abl1/2 (phospho Tyr393/439) Polyclonal Antibody

Catalog No	YP-Ab-14290
Isotype	IgG
Reactivity	Human;Mouse
Applications	WB;IHC;IF;ELISA
Gene Name	ABL1/ABL2
Protein Name	Tyrosine-protein kinase ABL1/2
Immunogen	The antiserum was produced against synthesized peptide derived from human Abl around the phosphorylation site of Tyr393/412. AA range:406-455
Specificity	Phospho-Abl1/2 (Y393/439) Polyclonal Antibody detects endogenous levels of Abl1/2 protein only when phosphorylated at Y393/439.
Formulation	Liquid in PBS containing 50% glycerol, 0.5% BSA and 0.02% sodium azide.
Source	Polyclonal, Rabbit,IgG
Purification	The antibody was affinity-purified from rabbit antiserum by affinity-chromatography using epitope-specific immunogen.
Dilution	Western Blot: 1/500 - 1/2000. Immunohistochemistry: 1/100 - 1/300. Immunofluorescence: 1/200 - 1/1000. ELISA: 1/5000. Not yet tested in other applications.
Concentration	1 mg/ml
Purity	≥90%
Storage Stability	-20°C/1 year
Synonyms	ABL1; ABL; JTK7; Tyrosine-protein kinase ABL1; Abelson murine leukemia viral oncogene homolog 1; Abelson tyrosine-protein kinase 1; Proto-oncogene c-Abl; p150; ABL2; ABLL; ARG; Abelson tyrosine-protein kinase 2; Abelson murine leukemia vira
Observed Band	125(200kd BCR-ABL complex)
Cell Pathway	Cytoplasm, cytoskeleton. Nucleus. Mitochondrion . Shuttles between the nucleus and cytoplasm depending on environmental signals. Sequestered into the cytoplasm through interaction with 14-3-3 proteins. Localizes to mitochondria in response to oxidative stress (By similarity). .; [Isoform IB]: Nucleus membrane; Lipid-anchor. The myristoylated c-ABL protein is reported to be nuclear.
Tissue Specificity	Widely expressed.
Function	catalytic activity:ATP + a [protein]-L-tyrosine = ADP + a [protein]-L-tyrosine phosphate.,cofactor:Magnesium or manganese.,disease:A chromosomal aberration involving ABL1 is a cause of chronic myeloid leukemia (CML) [MIM:608232]. Translocation t(9;22)(q34;q11) with BCR. The translocation produces a BCR-ABL found also in acute myeloid leukemia (AML) and acute lymphoblastic leukemia (ALL).,enzyme regulation:Stabilized in the inactive form by an association between the SH3 domain and the SH2-TK linker region,



interactions of the amino-terminal cap, and contributions from an amino-terminal myristoyl group and phospholipids. Activated by autophosphorylation as well as by SRC-family kinase-mediated phosphorylation. Activated by RIN1 binding to the SH2 and SH3 domains. Inhibited by imatinib mesylate (Gleevec) which is used for the treatment of chronic myeloid leukemia (CML).,function:Regulates

Background

This gene is a protooncogene that encodes a protein tyrosine kinase involved in a variety of cellular processes, including cell division, adhesion, differentiation, and response to stress. The activity of the protein is negatively regulated by its SH3 domain, whereby deletion of the region encoding this domain results in an oncogene. The ubiquitously expressed protein has DNA-binding activity that is regulated by CDC2-mediated phosphorylation, suggesting a cell cycle function. This gene has been found fused to a variety of translocation partner genes in various leukemias, most notably the t(9;22) translocation that results in a fusion with the 5' end of the breakpoint cluster region gene (BCR; MIM:151410). Alternative splicing of this gene results in two transcript variants, which contain alternative first exons that are spliced to the remaining common exons. [pr

matters needing attention

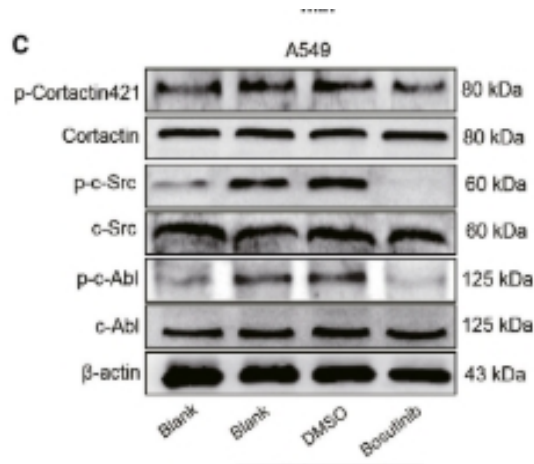
Avoid repeated freezing and thawing!

Usage suggestions

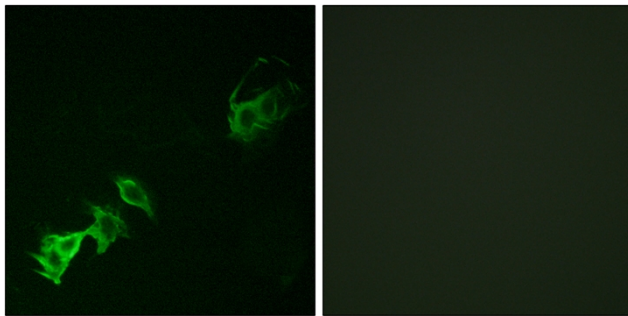
This product can be used in immunological reaction related experiments. For more information, please consult technical personnel.



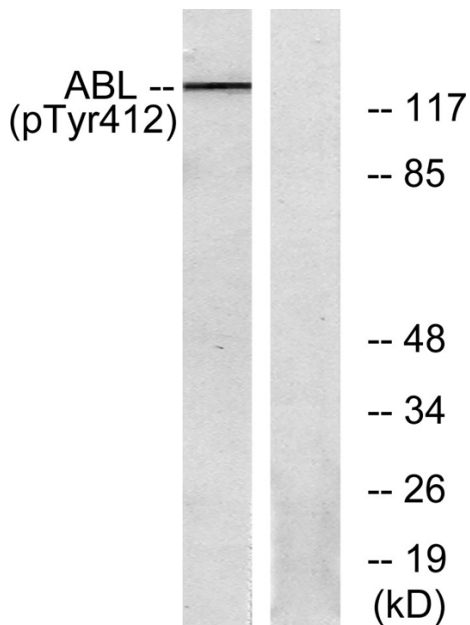
Products Images



Fan, Mengtian, et al. "CX3CL1 promotes tumour cell by inducing tyrosine phosphorylation of cortactin in lung cancer." *Journal of Cellular and Molecular Medicine* 25.1 (2021): 132-146.



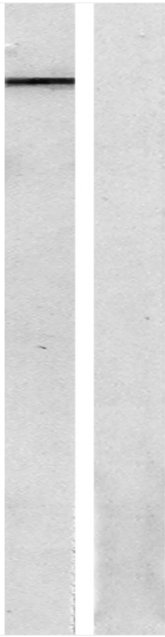
Immunofluorescence analysis of A549 cells, using Abl (Phospho-Tyr393/412) Antibody. The picture on the right is blocked with the phospho peptide.



Immunohistochemistry analysis of paraffin-embedded human breast carcinoma, using Abl (Phospho-Tyr393/412) Antibody. The picture on the right is blocked with the phospho peptide.



ABL --
(pTyr412)



-- 117

-- 85

-- 48

-- 34

-- 26

-- 19

(kD)

Western blot analysis of lysates from RAW264.7 cells, using Abl (Phospho-Tyr393/412) Antibody. The lane on the right is blocked with the phospho peptide.